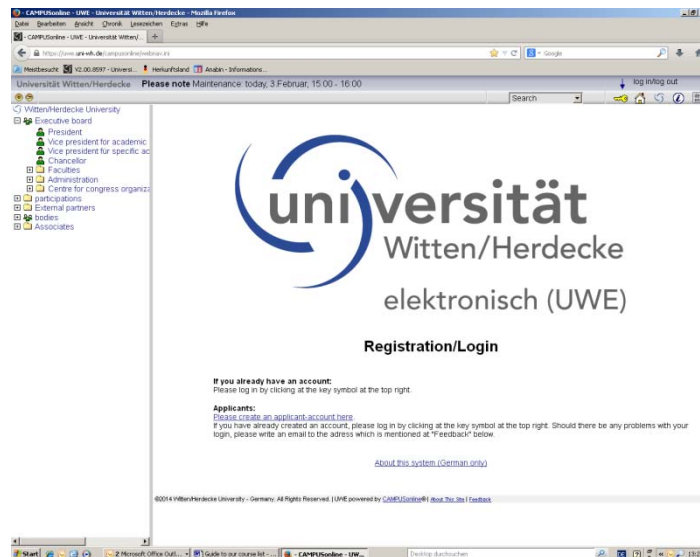


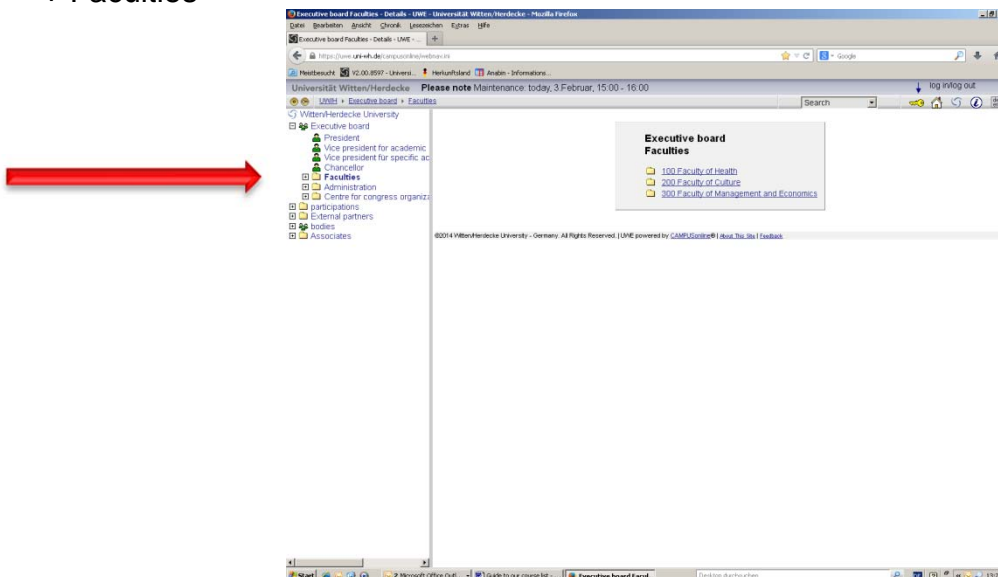
Guide to the course list Witten/Herdecke University, Faculty of Management and Economics

Visit us under <https://uwe.uni-wh.de/campusonline/webnav.ini>



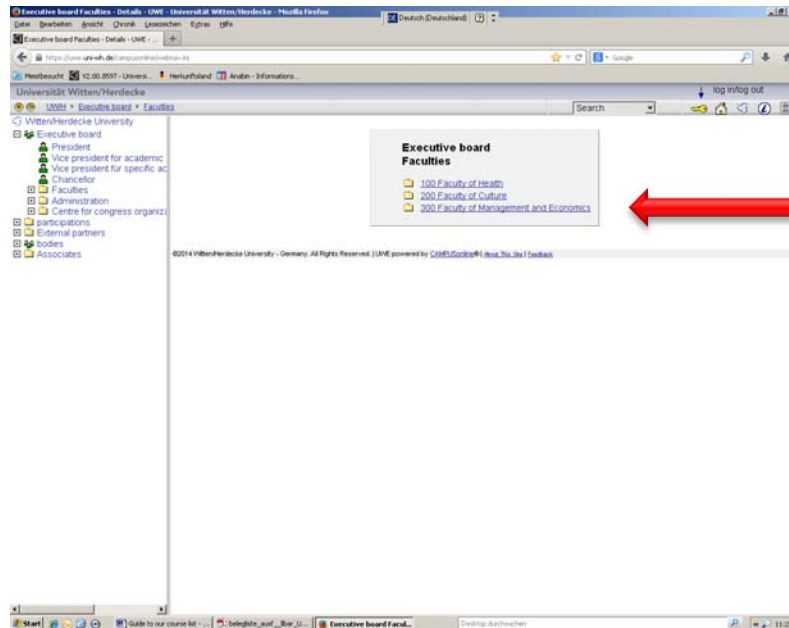
Step 1)
Select language with the button “**de/en**” (de = German, en = English) on the upper right

Step 2)
Select **+Faculties** in the menu on the left side
+ Faculties



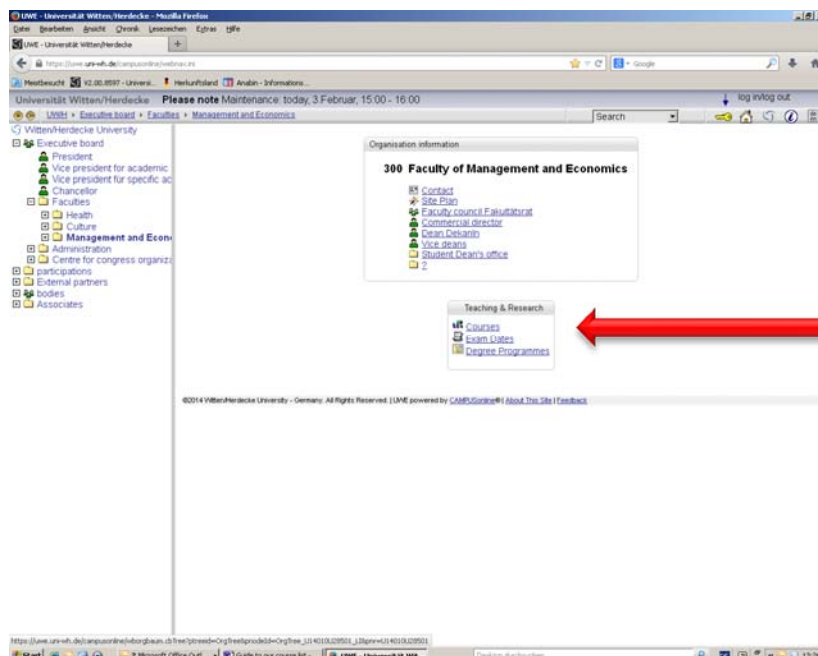
Step 3)

Select the Faculty of your choice in menu in the center of the page, e.g. **300 Faculty of Management and Economics**



Step 4)

Select **Courses** under Teaching & Research in the lower menu in the center of the page



Step 5)

View of all courses for the current academic year

Select in the filter on the upper right

- Academic year (1)

Select in the filter above the course list

- Winter semester or summer semester respectively (2)

The list starts with the courses for Winter Semester and then on a later page follows the list for Summer Semester

The screenshot shows the 'Courses offered' page for the Faculty of Management and Economics at the University of Witten/Herdecke for the academic year 2016/17. The interface includes a navigation menu on the left, a search bar at the top, and a main content area with a table of courses. Three red arrows with numbered boxes point to specific elements: arrow 1 points to the 'Academic year' dropdown menu (set to 2016/17); arrow 2 points to the 'Semester' dropdown menu (set to Winter semester); arrow 3 points to a course entry in the table (300 0008: Investment (B4-2; BB1-V)).

Course no.	Sem.	Term	Title	Duration	Type	Part/Exams	SPO	Lecturer (assistant)	ESD	Languages of instruction
300 0000	W		Mathematics (BM-PMe-1601; BP-PMe-1601; BK1-1)	2	SE	0/0/0	4,0,0	Bohde J	300	German
300 0001	W		Statistics	3	SE	0/0/0	4,0,0	Lefering R	300	German
300 0003	W		Fundamentals of scientific and empirical research; Academic Writing	1	SE	0/0/0	3,0,0	Calabro A, Campopiano G, Löhde A	300	English
300 0004	W		Organisation and Management (BE2-1)	2	SE	0/0/0	2,0,0	Möllering G, Herok L	300	English
300 0005	W		Value-Added Management (B3-2; BB2-V)	2	SE	0/0/0	2,1,0	Steiner M, Marzinek L, Filko S	300	English
300 0007	W		Financial Accounting (B4-1; BP4 (Part I))	2	SE	0/0/0	3,1,0	Strauß E, Reuter C, Reuß A, Müller U	300	German
300 0008	W		Investment (B4-2; BB1-V)	2	SE	0/0/0	3,1,0	Wende S, Reuß A	300	German
300 0009	W		Cost Accounting	2	SE	0/0/0	3,1,0	Strauß E, Müller U, Reuß A, Reuter C	300	German
300 0010	W		Microeconomics I (BM-PEc-1601; BP-PEc-1601; BE5-1; P5-1)	2	SE	0/0/0	2,0,0	Gorbenko A, Steinbeck J, Anis S, Sauerland D	300	German
300 0011	W		Microeconomics II (B5-2; P5-2)	2	SE	0/0/0	4,0,0	Zweymert J, Anis S	300	German
300 0012	W		New Institutional Economics (B5-3; P5-3; BM-PEc-1603)	2	SE	0/0/0	1,0,0	Schmidt A, Khoroshun O, Anis S	300	German
300 0015	W		Economic and Financial Policy (B6-3; P6-3)	2	SE	0/0/0	4,2,0	Schmidt A, Khoroshun O, Anis S	300	German
300 0016	W		Start-up Creation and Management (BE7-1; FBM10-1)	2	SE	0/0/0	2,0,0	Bohmet-Joschko S	300	German
300 0017	W		Business Creation Entrepreneurial Lab (BE7-2; FBM10-2)	2	SE	0/0/0	4,0,0	Bohmet-Joschko S	300	German
300 0018	W		Current Issues in Economics (M26) (Healthcare Innovation Camp; Apps for Health)	2	SE	0/0/0	0/0/0	Bohmet-Joschko S	300	German
300 0020	W		Current Issues in Management I (M26-1) (German-Brazilian Economic Relations – Engine for Growth and Employment)	2	SE	0/0/0	0/0/0	Thielen G, Herok L	300	German
300 0021	W		Mentored Work Experience (BE9; P24; M24; FBM12)	3	CO	0/0/0	3,0,0	Wegmann K	300	German
300 0024	W		Academic Readings in Management	3	SE	0/0/0	4,0,0	Calabro A, Campopiano G, Löhde A, Wolff J	300	English

If you look for details/course content/schedule open the respective page with a double click (3)